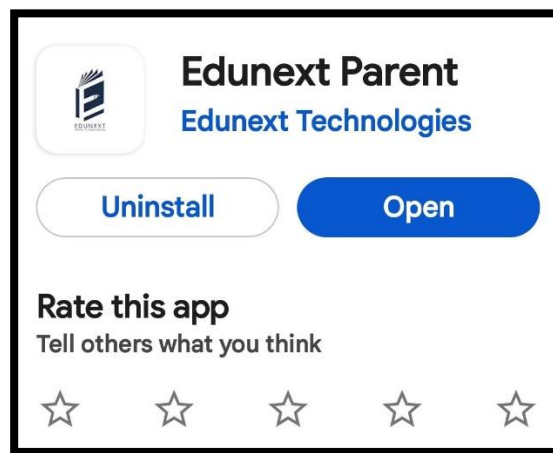




DELHI PUBLIC SCHOOL TAPI

How to enroll and use DPS Tapi APP

Step 1: Download and install the app 'Edunext Parent' from the App Store or Play store.



Step 2: Enter the School Code - **dpstapi**



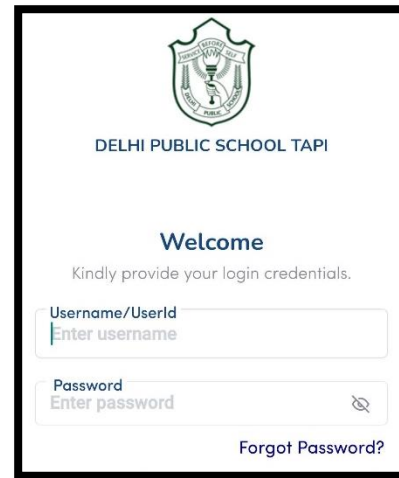
Step 3: Enter the **Student's admission no.** in the Username and the current **password(if changed).**

Example:

Username: M-1100-24

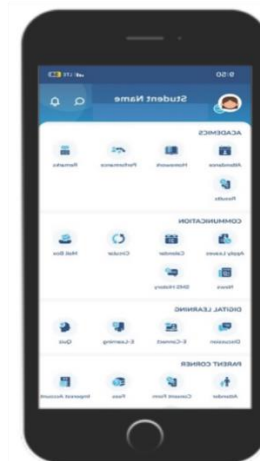
(Adm no. with no space in between)

Password: Current password(If changed)



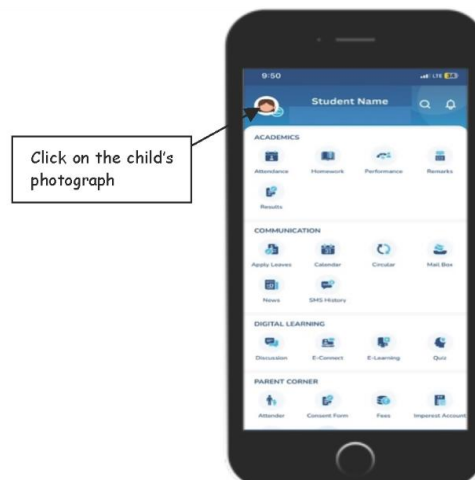
Step 4: You will be able to view the following:

- Academics
- Communication
- Digital Learning
- Parent corner



In case of other sibling, follow the given steps.

Step 5: Click on the **photograph of the child** given on the left-hand corner



Step 6: Click on **Manage User** option.



Step 7: Repeat **Step-2** and **Step-3**.

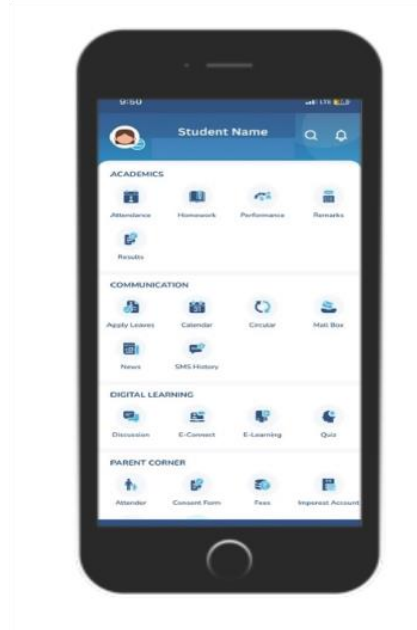


Step-2

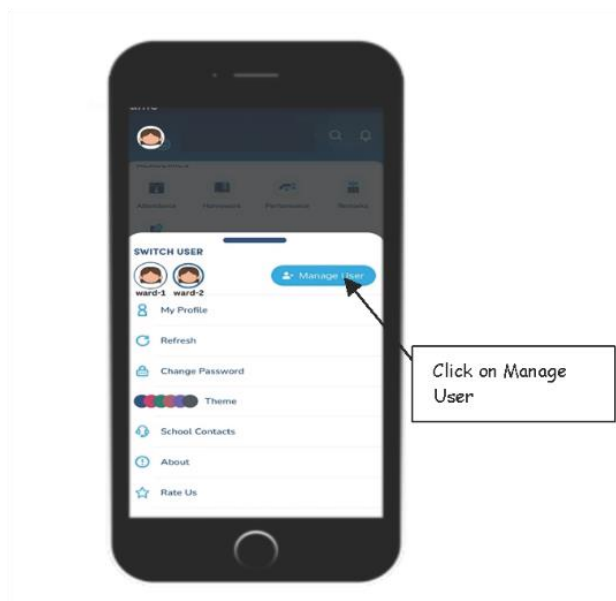


Step-3

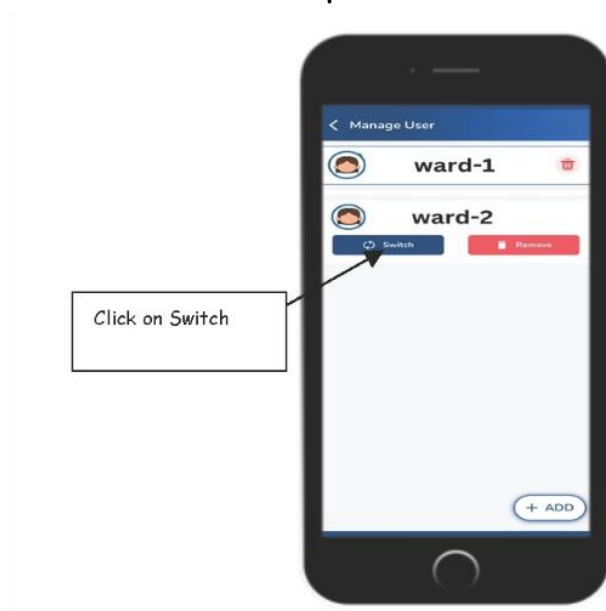
Step 8: You will be able to view the profile of your second ward.



Step 9: In case to go back to the profile of your first ward, click on the **second ward's photograph**. Click on **Manage User**.



Step 10: You will be able to view the names of both the wards. Click on **Switch** to view the second ward's profile.



Step 11. If you have any issue with the password, send an email at info@dpstapi.net.